

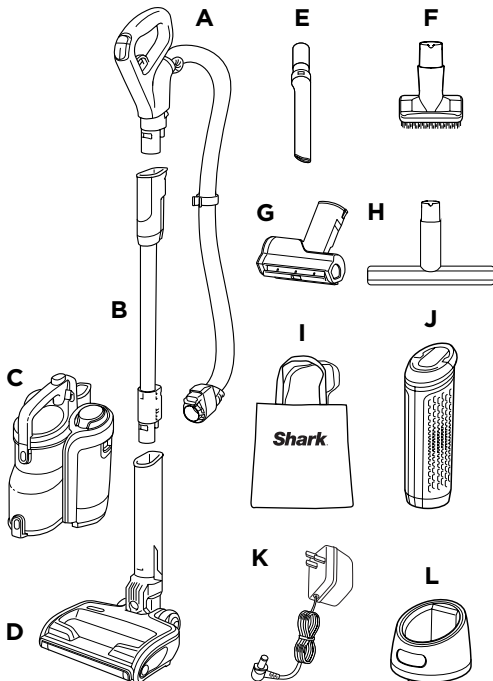
Please be sure to read the enclosed Shark® Instructions prior to using your unit.

Shark DuoClean™ Cordless Upright with Powered Lift-Away™

QUICK START GUIDE

WHAT'S INSIDE

- A Handle and Hose
- B Wand
- C Vacuum Pod
- D DuoClean™ Floor Nozzle
- E Crevice Tool
- F Dusting Brush
- G Motorised Pet Tool (Certain Models Only)
- H Wide Upholstery Tool
- I Accessory Tote Bag
- J Lithium-Ion Battery
- K Charging Cord
- L Battery Charging Cradle



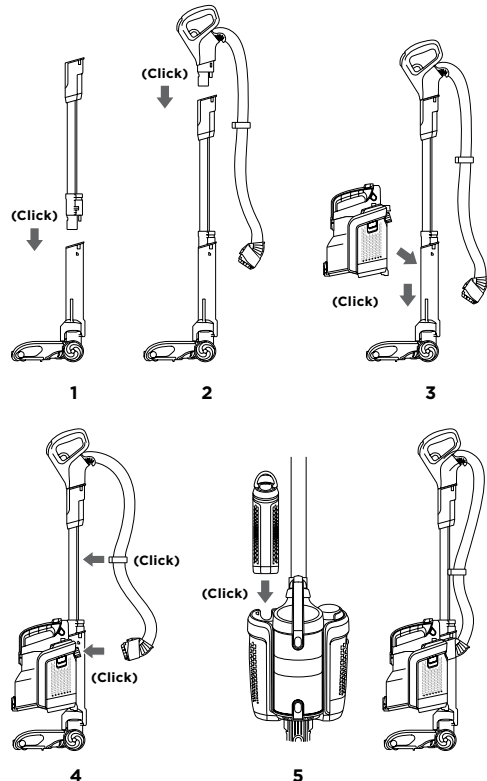
NOTE: Not all units come with all accessories shown here. Please see the top flap of your box for the select accessories included with your unit.

IC160UK_Series_QSG_MP_180622_MV2

ASSEMBLY

- 1 Insert wand into floor nozzle.
- 2 Insert handle into wand.
- 3 Align the bottom of pod onto the rails on the front neck of the floor nozzle. Slide pod down the rails until it clicks into place.
- 4 Connect hose to back of pod, and attach hose clip onto wand.
- 5 Insert fully charged battery into pod with the handle toward the back.

For proper operation, ensure all are firmly connected.



NOTE: The Lithium-Ion Battery must be charged before first use. A complete charge takes approximately 3.5 hours.

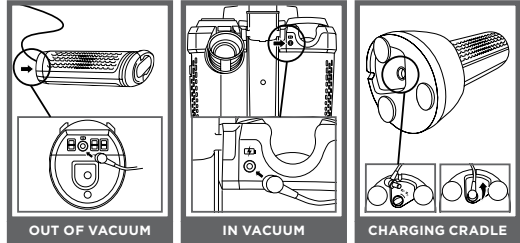
3 WAYS TO CHARGE

To remove the battery for charging, lift the handle on top of the battery and pull up. The battery must be charged before first use.

 A complete charge takes approximately 3.5 hours.

IMPORTANT: When charging, connect the charger to the port first, then plug the charger into socket.

NOTE: The battery must be charged before first use. A complete charge takes approximately 3.5 hours. Charge Indicator gauge on top of battery will illuminate when charging. See enclosed Instructions for details.

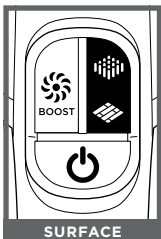


VERSATILE CLEANING



SETTINGS



Press **Power** button.




Select surface setting:

-  **Carpet**
For thick pile carpets.
-  **Floor**
For hard floors and rugs.

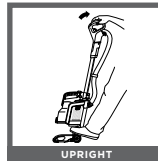


Press icon to boost power:

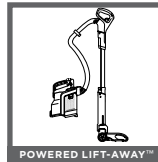
-  **Boost Power**
Press and hold for a power boost.

NOTE: The **Max Power** setting drains the battery faster.

MODES



For cleaning carpets and hard floors. To activate brushroll, step on floor nozzle and tilt handle back.



Use Powered Lift-Away to reach under furniture to clean carpets and hard floors.



Use the wand in Lift-Away mode for more reach when cleaning above-floor areas like coving or skirting boards.




Use the handle in Lift-Away mode for more detailed cleaning of above-floor areas like upholstery, window sills or stairs.

NOTE: Vacuum pod may also remain on floor nozzle in Above-Floor mode.

NOTE: Accessories attach to either the wand or the handle.

© 2018 SharkNinja Operating LLC. SHARK is a registered trademark of SharkNinja Operating LLC. DUOCLEAN AND POWERED LIFT-AWAY ARE TRADEMARKS OF EURO-PRO EUROPE LTD.

 @sharkcleaninguk

 @sharkcleanuk

 @sharkcleanuk